

For **90 YEARS**, we have connected vulnerable children,
adults, and families, separated by an international border,
to the services and support they need.

Support



Protect



Reunite



2014 ANNUAL REPORT





Executive Message

2014 brought an influx of **unaccompanied vulnerable children** from the Northern Triangle (Guatemala, El Salvador, Honduras) into the United States in **unprecedented numbers**.



JULIE G. ROSICKY

Most of these children were escaping poverty, child abuse, neglect, organized crime, and persistent gang violence. They endured an incredibly difficult journey to **REUNITE** with their families already in the U.S. ISS-USA responded to the crisis in a number of ways: First, to **PROTECT** these children when they first arrived, ISS-USA advocated for vulnerable children to be temporarily housed with families, instead of in large warehouses.

Second, ISS-USA enhanced its services to **SUPPORT** these children through the difficult adjudication of their cases by ensuring that those advocating for them had all the necessary information from their home countries that was critical to making good decisions on their behalf.

Finally, ISS-USA hosted a conference with the University

of Maryland School of Social Work. Key input from Ambassadors: **Susan Jacobs** (Department of State), **Jose Julio Alejandro Ligorria Carballido**, (Guatemala), **Gary Doer** (Canada), **Francisco Roberto Altschul Fuentes**, (El Salvador) and **Salvador Rodenzo**, (Honduras) and numerous other experts facilitated fruitful discussions about developing **child-centered practices** in Law, Social Work and Policy for Cross-Border Families. In particular, the conference took a regional approach to protecting the best interests of children in, and from, the Northern Triangle.



MARY MENTABERRY

ISS-USA is celebrating its **90th anniversary** of providing cross-border services to children and families around the globe. We are a long way from being finished with our work, but we look forward to continuing to use the valuable lessons learned from our past 90 years to support, protect and reunite children and families across international borders.

JULIE GILBERT ROSICKY

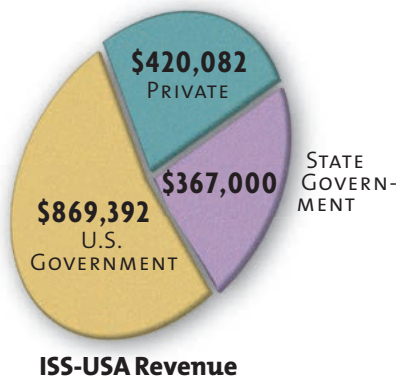
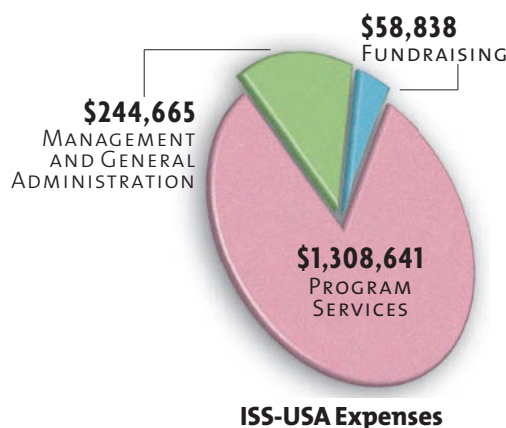
Executive Director

MARY MENTABERRY

Board Chair

2014 FINANCIAL INFORMATION

Total Expenses 2014: \$1,612,144 **Total Support and Revenue 2014:** \$1,656,474



ISS-USA is extremely grateful to our individual, family, foundation, government and nongovernment **supporters**, whose financial or in-kind contributions help make our work possible. To see a complete listing of our supporters please visit our website, www.iss-usa.org. Among our supporters, ISS-USA is proud to include 100 % of our board members.

ISS Milestones

YWCA, ISS founders, published "*The Welfare of Migrants*," the very first report of its kind!



1921

Established international headquarters in Geneva, Switzerland



1924

Incorporated in NYC



1926

Found homes in the U.S. for thousands of refugee children from Europe



1939

Changed name of organization from International Migration Service to International Social Service (ISS)



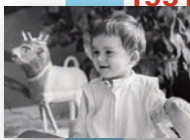
1946

- ▶ Initiated family finding for children of U.S. Service men
- ▶ Studied the effects of Intercountry Adoption and pioneered the establishment of best social work practices



1950s

Advocated to pass the UN Convention relating to the status of refugees



1951

Added medical social work unit



1960

Created impetus to develop a task force on unaccompanied refugee children



1970

1980s



Contributed to the development of the Hague Child Abduction Treaty and the UN Convention on the Rights of the Child

1990s



repatiation assistance to U.S. Citizens returning from foreign countries, in cooperation with HHS

- ▶ Advocated for the Hague Adoption Treaty
- ▶ Relocated from NYC to Baltimore
- ▶ Began providing

2000s



- ▶ Established the Helton Institute
- ▶ Studied the cross border placement of foster children with relatives abroad

2006



Assisted with the mass evacuation of U.S. citizens from Lebanon to the U.S.

2010



Provided repatriation assistance to thousands of U.S. evacuees returning from Haiti post-earthquake

2014



Advocated for better protection of vulnerable children fleeing to the U.S. from Central America in record numbers

2014



Hosted Ambassadors from Central American countries and Canada to discuss a coordinated approach to child protection for migrating, vulnerable children

2014



Increased capacity to more effectively protect vulnerable children migrating in, and between, Central America, Mexico and the U.S.



ISS-USA supported, protected and reunited more than **3000 people** from **99 countries** and all **50 states** in 2014



"My wife lives in **Kansas** and my kids want to visit, but I'm not sure her home is safe for them."

(From a man in **Canada**)



"My client says she cannot go back to **El Salvador** because her life is in danger, but I need evidence."

(From a lawyer in **Arizona**)



"My mother moved to **Costa Rica**, but I haven't heard from her in months. Is she ok?"

(From a man in **Michigan**)



More than **130 homestudies** were completed in 2014



"I was adopted from **Colombia**, and was raised in the **Netherlands**. I now want to find my birth siblings, who might live in the U.S. Can ISS-USA help me, and where do I start?"



"My birth father is **American**, and I am hoping that I might be able to locate him there."

(From a woman in **Germany**)



"We had a child predator in **South Africa** who fled to the U.S.; we want to alert local authorities."

(From a police officer in **South Africa**)



"I have been living in **Thailand** for 15 years. Now I am sick and must return home, but I don't have the resources."

(From an elderly U.S. citizen in **Thailand**)



"My husband is American and he went back with the kids. I can't reach him from **Russia**. Are they safe?"

(From a woman in **Russia**)

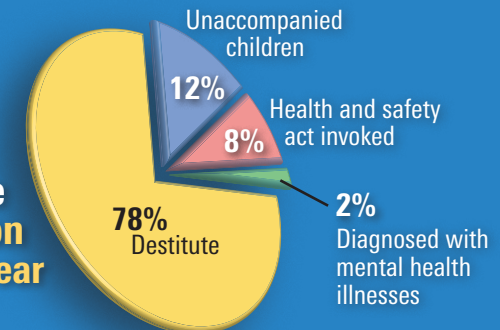


"I have a child in state custody who says her grandmother lives in **Australia**. Can you find her?"

(From a child welfare worker in **Delaware**)



736 people received repatriation assistance last year



2014 BOARD MEMBERS

MARY MENTABERRY, *Chair*
TROOPER SANDERS, *Vice Chair*
JAMES PAUL, *Secretary*
WILLIAM EVANS, *Treasurer*
ROBERT G. MILES
MARLEE BROWN
ANN ESTIN
GENE GRABOWSKI
LONNIE TAYLOR
DIANE TUKMAN

2014 STAFF MEMBERS

Executive Team

JULIE GILBERT ROSICKY,
Executive Director
STEPHNEY ALLEN,
*Director of Repatriation
Management
and Internal Operations*
FELICITY SACKVILLE NORTHCOTT,
*Director of External Partnerships
and International Services*

ISS Team

HALEY BEECH, *Intercountry
Case Manager*; JUANA BODDEN,
Intercountry Case Manager;
MI CHANG, *Repatriation Case
Manager*; KATRINA CLEMONS,
Intercountry Case Manager;
KRISTEN CONNOR, *Repatriation
Case Manager*; JANAE FOWLER,
Intake Administrator;
JENNIFER GREY, *Repatriation
Database Coordinator*;
WENDY JEFFRIES, *Program
Manager*; ESTHER KEINKEDE,
Finance Coordinator;
YALEMZEWD MULAT, *Repatriation
Casework Supervisor*;
AUDREY NOGUERA SABISTON,
Repatriation Case Manager;
CRYSTAL NWACHU, *Intercountry
Case Manager*; AMANDA REED
WILLIAMS, *Repatriation Assistant*;
JODIANNA RINGEL, *Development
Officer*

GET INVOLVED



SIGN UP for our e-Newsletter at www.iss-usa.org



FOLLOW US on Twitter @ISS_USA



LIKE US on Facebook



SUBSCRIBE to our **Blog** and comment on our latest insights and thought-provoking posts.

Donate now!

MAKE A GIFT. We rely on gifts from individuals like you to make our work possible. Your one-time or recurring gift will help unite families around the world! **Donations** can be made through our website, or by mailing in a check made out to ISS-USA.

COME to an Event.



REQUEST a Training.



International Social Service – USA

200 E. Lexington Street, Suite 1700
Baltimore, MD 21202 USA

T: 443-451-1200 F: 443-451-1230

E: question@iss-usa.org

W: www.iss-usa.org