



**International
Social Service
USA**

ANNUAL SUMMARY 2018



2018 ANNUAL SUMMARY



In 2018, ISS-USA put its cross-border case management expertise to work in a variety of contexts. Specifically we:

- Contributed to discussions aimed at developing principles that protect the best interest of children who are donor and surrogacy conceived,
- Hosted a conference to encourage those who work with families involved in cross border conflicts to use mediation, among other existing tools, to resolve these conflicts in the best interest of the child,
- Assisted the U.S. Department of Health and Human Services (HHS) to develop emergency preparedness plans for states using our expertise with group repatriations,
- Concluded a capacity building project to help those charged with the care and protection of children with disabilities have more access to their families and family based care in Mexico,
- Responded to the needs of children who were separated from their families at the Southern U.S. border by developing a return and reintegration program for families who choose to return and reintegrate in Guatemala,
- Presented at the ISS Hong Kong regional meeting and celebrated their 60th anniversary.

None of this work is possible without the support of our donors, volunteers, board of directors and staff!

Thank you for reunifying and reintegrating separated families by supporting ISS-USA. You have made a difference in the lives of many cross border families!



WHAT WE DID:

We worked in **52 states and territories**

We worked with **102 countries**

We provided **1,092 services to families**

We served **792 children**



"It is less difficult to integrate into daily life and motivate myself to get a job."

- Mr. Carrion, recipient of ISS-USA's Reunification and Reintegration Program services in Guatemala

FINANCIAL INFORMATION:

International Social Service, USA's Financial Activities Throughout 2018:

Service Fees and Commissions
11%

State Government
16%

Foundations
8%

Management and General Admin
11%

Fundraising
3%

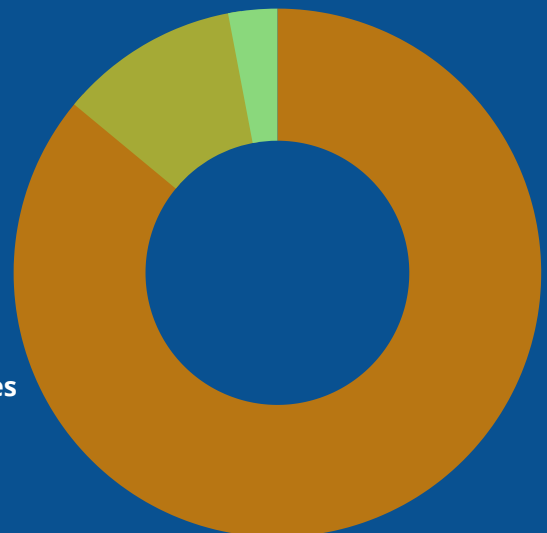
U.S. Government
63%

Individuals, Corporations and In-Kind Contributions
2%

Total Expenses:
\$2,247,238.00

Ending Net Assets:
\$677,771.00

Program Services
86%



STORIES FROM 2018



Amara's Story



Amara*, a citizen of India, was abandoned by her family when she was only 16-years-old. She had experienced physical abuse and an attempt had been made to force her into marriage with a relative. After connecting with an ISS member in India, it was discovered that Amara had an adult sibling, Tanvi*, who lived in Michigan and wished to care for her.

A social worker with Child Protective Services met Amara at the airport upon her arrival in the United States, and she was interviewed and admitted into CPS custody. ISS-USA conducted an in-depth interview and homestudy with Tanvi as part of the clearance process, to ensure that her home would be a safe and nurturing environment for Amara.

The results of the home-study were excellent, and Amara was reunited with Tanvi. Amara relishes the opportunity to attend school and, along with her older sister, volunteers for organizations promoting women's rights and education around the world.

Jean's Story

Jean* was born in France. His father Paul, a US service member and US citizen, and his mother, a French citizen separated when he was 13 years old. After a few years of shared custody in France, his father needed to return to North Carolina.

A few years later, Jean was neglected by his mother and step-father and his father requested full custody. At the request of the French court, ISS-USA conducted a home study with Paul in his home, interviewing him about plans to care for Jean, ways he would support Jean's French heritage, and assessing his ability to safely care for Jean.

Ultimately Jean was reunited with his father and the social worker returned every other month to check on Jean's progress. Jean is adjusting to his new school, likes hiking with his dad and family on weekends, and keeps in touch with his maternal relatives in France.



Rudolf's Story



Rudolf*, a German citizen living in Munich, contacted ISS-USA's local partner in Germany with the hope of finding information on his biological father. ISS Germany conducted an ancestry search and discovered that Rudolf had a US citizen half-brother, Kent*, who lived with his wife and adult children in Pennsylvania.

ISS Germany partnered with ISS-USA to reach out to Kent with an email. When Kent contacted our office, we were able to share Rudolf's story with him and, through family photos and letters, introduce him to the half-brother he'd never known.

Rudolf and Kent are now building a brotherly relationship, and Kent has plans to make a trip to Germany to visit Rudolf in the near future.

2018 BOARD MEMBERS:



ANN ESTIN

Chair



SUSAN JACOBS

Vice- Chair



WILLIAM EVANS

Treasurer



MARK GREENBERG

Secretary



ROBERT MILES



RODRIGO MENINO



MARY MENTABERRY



GENE GRABOWSKI



STEPHEN CULLEN



STACEY FLOAM



ALLISON BLAKE

2018 STAFF MEMBERS:

Senior Management Team

JULIE ROSICKY

Executive Director

STEPHNEY ALLEN

*Director of
Repatriation
Management &
Internal Operations*

FELICITY NORTHCOTT

*Director of External
Partnerships &
International Services*

Repatriation Team

YALEMZEWD MULAT

Program Manager

RACHEL BRUTON

NICOLE JOHNSON

PATRICIA PENN

AMANDA REED

SELWYN TOA

Intercountry Team

JANAE FOWLER

Intake Coordinator

OLIVIA BARRIOS

JUANA BODDEN

KATRINA CLEMONS

VIRGINIA MORALEDA

Administrative Team

MARIE BLUM

*Fund Development
& Communications
Coordinator*

ELAINE WEISMAN

*Program & Training
Manager*

ABIGAIL AYELE

NATASHA DENNEHY

ESTHER KEINKEDE

NAHLAH MELAIH

Emergency Team

JEANNE FORETIA

BENJAMIN MCMILLAN

**DARLENE CROWDER-
HAMILTON**



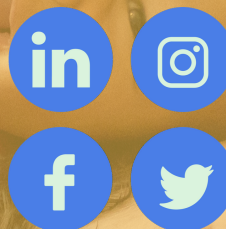
CONTACT US

Follow us

@International Social Service, USA

Follow us

@InternationalSocialServiceUSA



Follow us

@InternationalSocialServiceUSA

Follow us

@ISS_USA